



Tel: 800.285.0666 | sales@wastequip.com
www.galbreathproducts.com

TT-MODELS

LIVE PUP - ROLL OFF TRAILERS

MODELS: TT - Models

RAIL/MODEL TYPES: OR, IO, HH, EX, TM

(TT) - Texas Tongue roll-off cable hoist trailers are ideal for transporting two container loads safely and effectively when used in conjunction with a roll off truck. These trailers allow users to haul loads with or without roll off ready trucks. The TT is specifically designed to work integrally with Galbreath's pintle adaptable aprons, which allow for jackknifing the trailer for over-the-tongue dumping without having to disconnect. They can be built to accommodate the majority of regional container types from the industry standard (OR) - outside rail, (IO) - inside & outside rail, (HH) - deadlift, (EX) - outside rail extendable tail and (TM) - trough mount with troughs from 6" to 12" wide and various tail flaring options.



Standard Features

- Formed drop tongue drawbar for clearance behind roll off trucks (jackknife capable)
- Outside manual controls mounted at front of hoist
- (2) sets of Nylon Ratchet Hold Downs (front and rear)
- Automatic spring loaded (pass through type) - not included on TM-models
- 1 1/2" Steel Plates, Cupped for Std. 4" Roller & (Moveable Stop Blocks on TM-models)
- 4" O.D. with bronze bushings (not available on TM-models)
- 10" O.D. with grease grooved bronze bushings
- Inside Rail Rollers on IO-Model only
- 6" Bolt On Rear Ground Roller or California light bar on TM-models
- 2 spool / 45 GPM w/ safety bypass
- HD Rear Apron w/ Split Bumpers Hoist Up Alarm & LED Lighting
- Mid-Body LED Turn Signal Lights
- Driver's Side ABS Indicator Light mounted to front of fender
- Hoist Maintenance/Safety Prop
- Warranty: 12 Months & 2 years limited on hydraulic components
- Engineered and manufactured in the US

FEATURE	PUP TRAILERS
Trailer Frame	12" - A36 Steel - Milled I-Beam
Cross Members	10 1/2" x 4" x 3/16" - A36 Steel - Formed Channel
Trailer Tongue	Jackknife capable - Fabricated T-1 Steel and 10" I-Beam w/ 3" Bolt On Pintle Lunette
Hoist main frame	8" x 4" x 1/2" (3/8" on EX-model) - Structural tubing A500 Grade C
Hinge shaft	2 1/2" Rear Pivot - Solid Steel
Bumper	7-Gauge manufactured channel w/ recessed & sealed LED Lighting
Landing Gear	50,000 lb. Two Speed Twin Leg Landing Gear
Suspension/Axles	50,000 lb. Hutch Single Point Suspension w/ 25k lb. Oil Filled Axles
Wheels & Tires	10-Hole Hub Piloted Steel Rims w/ 11R/22.5 Tires - 16 Ply & Wheel Check Indicators
Front Safety Lock	Automatic spring loaded (pass through type) - not included on TM-models
Front stops	1 1/2" Steel Plates, Cupped for Std. 4" Roller & (Moveable Stop Blocks on TM-models)
Container Hold downs	(2) sets of Nylon Ratchet Hold Downs - 2-front & 2 rear
Outside Rollers	4" O.D. with bronze bushings (not available on TM-models)
Cable	7/8" - 6 x 37 EXIWRC Domestic Cable
Cable End	Swivel Eye on OR, EX models (w/ latch - IO model); Knuckle on HH model; Master Hook on TM model
Cable Anchors	(4) cable clamps
Cable Sheaves	10" O.D. with grease grooved bronze bushings
Lift cylinders	(2) - 6" Dual acting rod type
Winch cylinders	(2) - 6" Dual acting rod type
Hydraulic valve	2 spool / 45 GPM w/ safety bypass
Hydraulic Hoses	Quick Disconnects - 1" female (pressure line) & 1 1/4" male (return line) - 3,000 psi minimum rating
*Hydraulic Requirements	Requires - 1,850 psi (2,500 psi max.) with 37.5 GPM flow rating
*Oil reservoir	Requires - 50 gallon capacity tank or 80 gallon tank when used with roll off hoist truck

*Items that are not included as standard with these units



Formed drop down drawbar from high strength steel. Quick Disconnect hydraulic hoses. Air/Electrical trailer connections. Break-a-way cables w/ clevis hooks.



12" I-Beam trailer frame with 10" C-Channel cross members.



Front and Rear Nylon Ratchet Hold Downs (2-per side).



8" Hoist mainframes with cross members and dual winch cylinders and rod protectors.



Hutch Single Point 50k lb. Spring Suspension. 10 Hole Hub Piloted Steel Rims w/ 11R/22.5R 16 Ply Tires. Wheel Check Indicators on All Outside Rims.



4" O.D. Outside Rail Rollers w/ Bronze Bushings (OR, IO, HH, EX models only).



Outside Manual Control Valve at front of trailer.



HD Rear Apron w/ Hoist Up Alarm & Split Bumpers, Includes recessed LED lighting & Mud Flaps. Auto Folding Rear ICC Bumper - mechanical linkage style - folds up when hoist is raised; N/A on HH and EX models. 6" Ground Roller w/ bronze bushings (except HH-models). Flared Tail Ends help with miss-aligned containers on OR and EX-models.



Optional Equipment

OR (outside rail), IO (inside/outside rail), HH (deadlift), EX (extendible tail), TM (trough mount) Models

- Pioneer® tarping systems
- Lift Axles, Rims and Tires (various sizes, styles and ratings)
- Spare Tire Carriers (Side or Underbody)
- Auxillary Stops (Fold over the cylinder; Fold down in-frame; Over the roller)
- Auxillary Hold Downs
- Variety of Fenders (Steel, Alum. & Poly)
- Variety of Toolbox styles and sizes (Steel, Alum. & Poly)
- Scale Systems
- Hydraulic landing gear
- Telescopic lift cylinders
- Adjustable Pintle Eye Mounting Plate
- Outboard Supported Side Rollers
- T-1 Steel Wear Strips (standard on extendible tail models)
- Four Wire Hoses and Hose Protection Sleeves
- Side Mounted Skid Plates (Rear Wing or Full Length)
- LED Work Lights



HH (deadlift) Model w/ Knuckle Cable End



TM (trough mount) Model (6" to 10" available) w/ Master Hook, Oval or Pear Eye Cable Ends



EX (extendible tail) Model w/ Swivel Eye Cable End



IO (inside/outside rail) Model w/ Swivel Eye Cable End w/ Latch



Pioneer® tarping systems



Spare Tire Carriers (side or under body)



Lift Axles, Rims, Tires and variety of Fender types and styles



Toolbox styles and sizes (steel, aluminum & Poly)



Hydraulic single leg landing gear



Outboard Supported Side Rollers

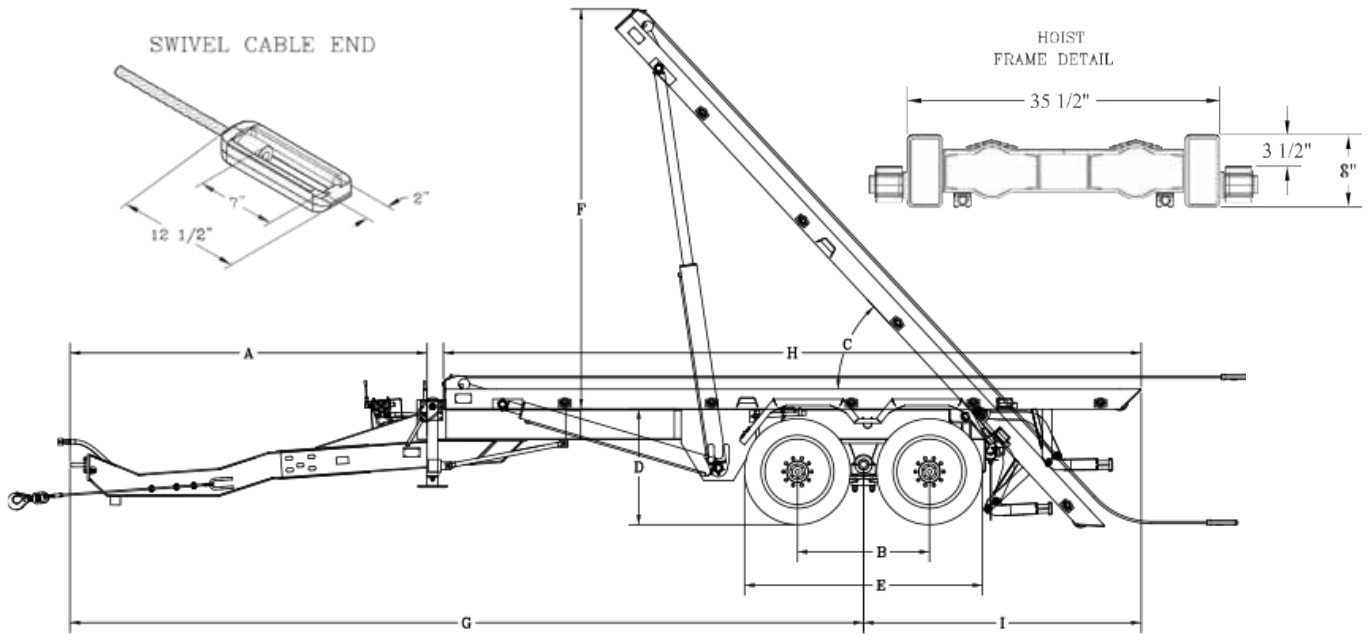


LED Work Lights mounted on front gantry or post and recessed in bumper or bolted onto bumper



TT-OR-176 shown w/ Pioneer tarp, hydraulic landing gear and steel fender options

TT-MODELS



Notes for chart above:

- 1) When recommending container lengths: weight distribution, fender interference and overhang are all factors. Please consult your local ordinances when determining the model of trailer needed to suit your container needs.
- 2) Factory tested with recommended container length and water level load.
- 3) Frame Height = Top of trailer frame to ground. Using 22.5" tires only. Tested w/ 46" frame height, for use with larger tires please consult engineering for clearance and capacity ratings.

Cycle Times @ 1,850 PSI & 37.5 GPM @ 1,500 RPM

Hoist Up -	30 sec.
Hoist Down -	15 sec.
Winch On -	34 sec.
Winch Off -	19 sec.

**Theoretical times shown for the TT-OR-176*

Models	TT-OR-176	TT-IO-176	TT-HH-176	TT-EX-176	TT-TM-176
FEATURE	TANDEM AXLE	TANDEM AXLE	TANDEM AXLE	TANDEM AXLE	TANDEM AXLE
Recommended Container Size ¹	18' to 22'	18' to 22'	18' to 22'	18' to 22'	18' to 22'
Rated Hoist Capacity ²	40k lbs.	40k lbs.	40k lbs.	40k lbs.	40k lbs.
Overall Trailer Length ('G' + 'I' measurements)	430" or 35' 10"	430" or 35' 10"	376" or 31' 4"	388" or 32' 4"	430" or 35' 10"
A – Drawbar to Jack	143 3/4"	143 3/4"	143 3/4"	143 3/4"	143 3/4"
B – Tandem Spread	53"	53"	53"	53"	53"
C – Dump Angle	47°	47°	47°	47°	47°
C1 – Load Angle (EX-model only)	-	-	-	31°	-
D – Frame Height - ³	46"	46"	46"	46"	46"
E – Tandem Tire Width	95 1/2"	95 1/2"	95 1/2"	95 1/2"	95 1/2"
F – Raised Height	161"	161"	164"	161"	164"
G – Wheelbase (drawbar to trunnion)	319 1/2"	319 1/2"	319 1/2"	319 1/2"	319 1/2"
H – Hoist Body Length	280"	280"	226"	237"	280"
I – Tandem trunnion to tail of hoist	110 1/2"	110 1/2"	56 1/2"	68 1/2"	110 1/2"
Lift Cylinders - (2) dual acting rod type	6"x 4"x 72"	6"x 4"x 72"	6"x 4"x 72"	6"x 4"x 72"	6"x 4"x 72"
Winch Cylinders - (2) dual acting rod type	6"x 4"x 80"	6"x 4"x 80"	6"x 4"x 80"	6"x 4"x 80"	6"x 4"x 80"
Extendible Tail Cylinder - (1) - (EX-model only)	n/a	n/a	n/a	3"x 2 1/2"x 80"	n/a
Rear ICC Bumper (auto folding mechanical)	standard	standard	n/a	n/a	standard
Approximate Weight w/ Standard Features	13,970 lbs.	14,262 lbs.	13,755 lbs.	14,634 lbs.	14,930 lbs.

* Containers that overhang the rear of the trailer's bumper (Fixed ICC or Folding ICC) by more than 24" will require the appropriate flagging to meet DOT requirements *

Minimum Truck Requirements (Tandem Axle)

Axle Rating: 12,000 Front / 44,000 Rear

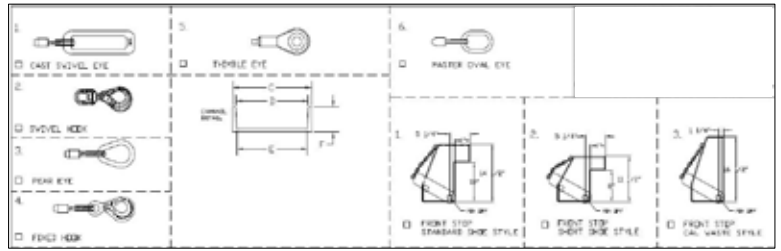
Hydraulic System (Tractor): 50 gallon reservoir w/ 37.5 GPM @ 1,500 RPM, 1,850 PSI or greater wet kit capable

Hydraulic System (Roll Off Truck): 80 gallon reservoir w/ 37.5 GPM @ 1,500 RPM, 1,850 PSI or greater wet kit capable

*Recommended use with similar hoses or larger to match the trailer's hydraulic system. Hoses from truck/tractor need to support the following hose ends:

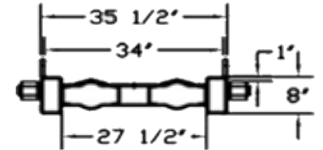
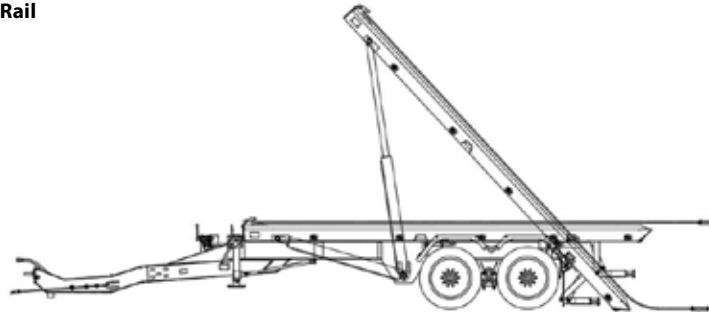
- 1" female quick disconnect (pressure line) connections must be thread type
- 1 1/4" male quick disconnect (return line) connections must be thread type

Cable End Types; Trough Channel Section; Trough Mount Front Stop Types

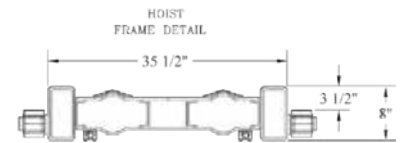
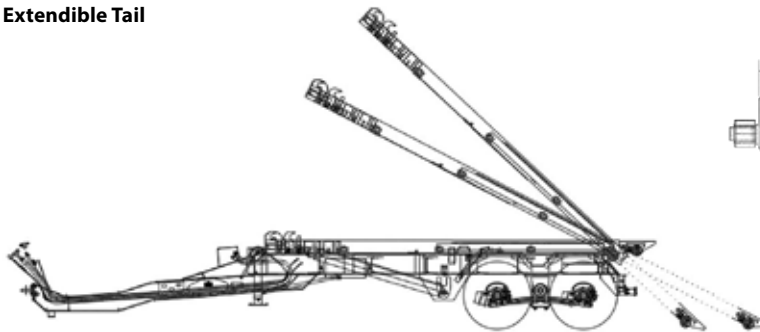


Other Model Types & Configurations

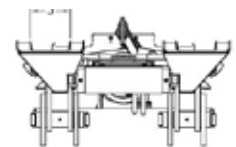
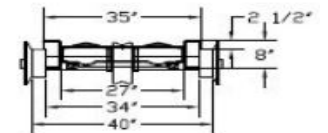
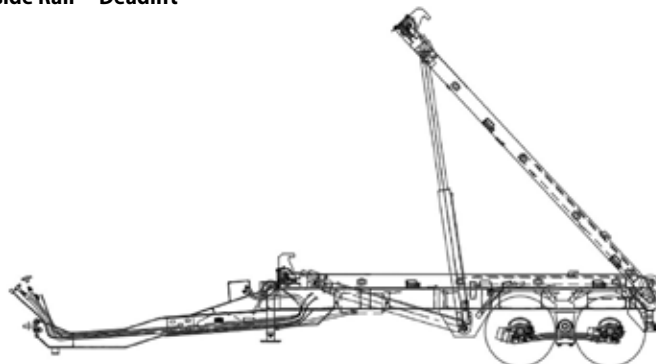
TT-IO-176 Inside/Outside Rail



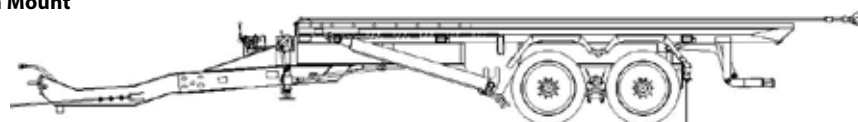
TT-EX-176 Outside Rail Extendible Tail



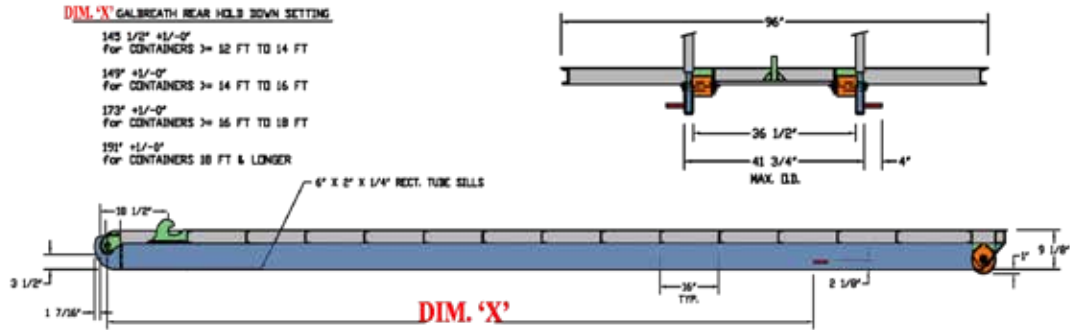
TT-HH-176 Narrow Outside Rail - "Deadlift"



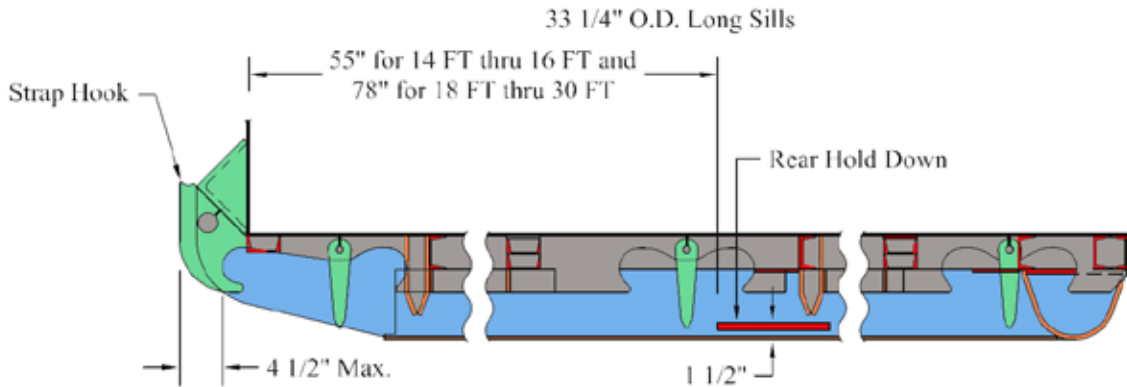
TT-TM-176 Trough Mount



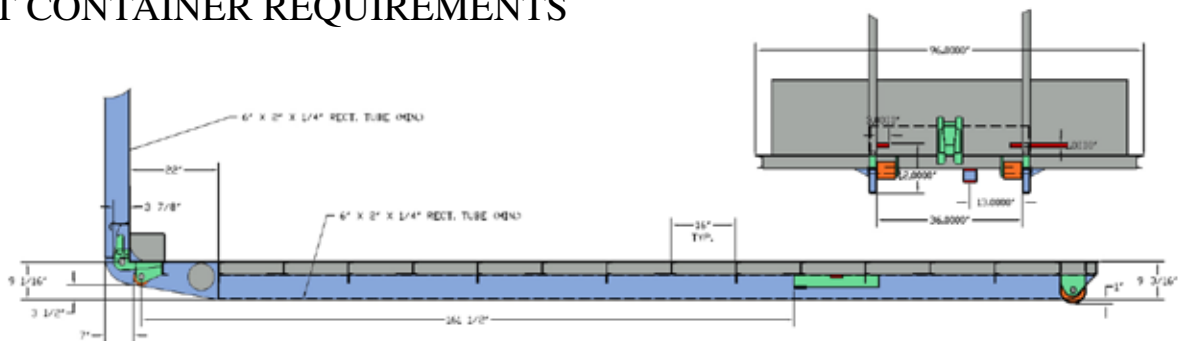
OUTSIDE RAIL CONTAINER REQUIREMENTS



INSIDE RAIL CONTAINER REQUIREMENTS



DEADLIFT CONTAINER REQUIREMENTS



Distributed by:



Galbreath is a Wastequip brand. Wastequip is the leading North American manufacturer of waste and recycling equipment for collecting, processing and transporting recyclables and solid or liquid waste. © Wastequip 2017 All rights reserved. Specifications subject to improvement without notice. Equipment displayed should be operated by properly trained personnel. Operators should become familiar with OSHA, ANSI and any other applicable standards or laws for using this equipment. Improper use, misuse, or lack of maintenance could cause injury to people and/or property. Photos used in the literature are illustrative only. We assume no liability or responsibility for proper training/operation of equipment not manufactured by Wastequip. We reserve the right to make changes at any time without notice. Information contained within this literature is intended to be the most accurate available at time of printing.